



SRI VENKATESWARA ENGINEERING COLLEGE

Karakambadi Road, Tirupati - 517 507, A.P.

Accredited by NAAC, Approved by AICTE & Permanently Affiliated to JNTUA

Recognized under section 2(f) & 12 (B) of UGC act 1956.

SVEC LIBRARY & INFORMATION CENTRE

Central library is truly a learning center built with 700 sq.m. of carpet area spreading over three halls to accommodate more than 150 students at a time. The library stock contains textbooks, reference books, journals, audio, video lectures, back volumes and project reports etc. The Library subscribes more than 60 national and international journals and has a very large collection of reference books on advanced disciplines that are aimed at developing students beyond their normal curriculum. In Central library more than 17664 volumes and around 2931 titles covering various advanced disciplines pertaining to all the branches of engineering courses.

Automated Library House Keeping operations are working by using *NewGenLib* library integrated software. Modules of the software include: Technical Processing, Circulation, Acquisition, Serials Management, Open Access Catalogue (OPAC), Administration, Queries and Reports.

Digital library is well equipped with 25 multimedia systems to access e-journals, e-books of International standards through databases like J-Gate, Tailor & Francis, N-LIST (National Library and Information Services Infrastructure for Scholarly Content.), and DELNET etc..

The library aim to develop a comprehensive collection of documents useful for the students, faculty and research community of the Institution.



- The SVEC Library follows an open access system except text books in the reserve section.
- Library is following Dewey Decimal Classification Scheme (000 – 999) for the shelf arrangement of books.
- While entering the library, readers should leave their personal belongings, such as bags, brief-cases, personal books and parcels near the counter reserved for this purpose. However, they can carry loose papers, note books and Laptop (without bag).
- Switch off your mobiles while entering the library.
- Books or other materials taken from the stacks should not be re-shelved by the readers. Books should be left on the reading table after use.
- Readers should maintain peace in the library and should not disturb other users in any way.
- Eatable items are strictly prohibited.
- Chairs and tables should not be disturbed from their position.
- Users should avoid resting their feet on tables, chairs, shelves, window sills.
- Readers leaving the library should allow the library/security staff to examine reading material their personal belongings.
- Issued materials should be protected from Rain, Dust, Insects, etc.
- Readers should not deface, mark, cut, mutilate or damage library material in any way. If anyone is found doing so, he/she will be charged the full replacement cost of the material.
- Personal papers and non-library materials should not be left unattended on tables.
- Do not move books/journals from their specific area to another area.
- Do not give your Id-card to others.
- The holder of ID-Card is responsible for any book issued against it as shown by library records.
- If one book of a set is damaged or lost, the member concerned shall be liable to replace the whole set.

Please Do:

- Show the documents which are being taken out of the library, to the staff at the check point.
- Contact the staff on duty/section staff for any queries.
- Keep the Library premises tidy.

Working Hours

- Working days : 08.00 AM to 06.00 PM
- Circulation Section(Working days) : 08.00 AM to 06.00 PM
- Sunday : 09.00 AM to 04.00 PM

Membership

Membership is open to all the staff and students of the college.

Membership Category

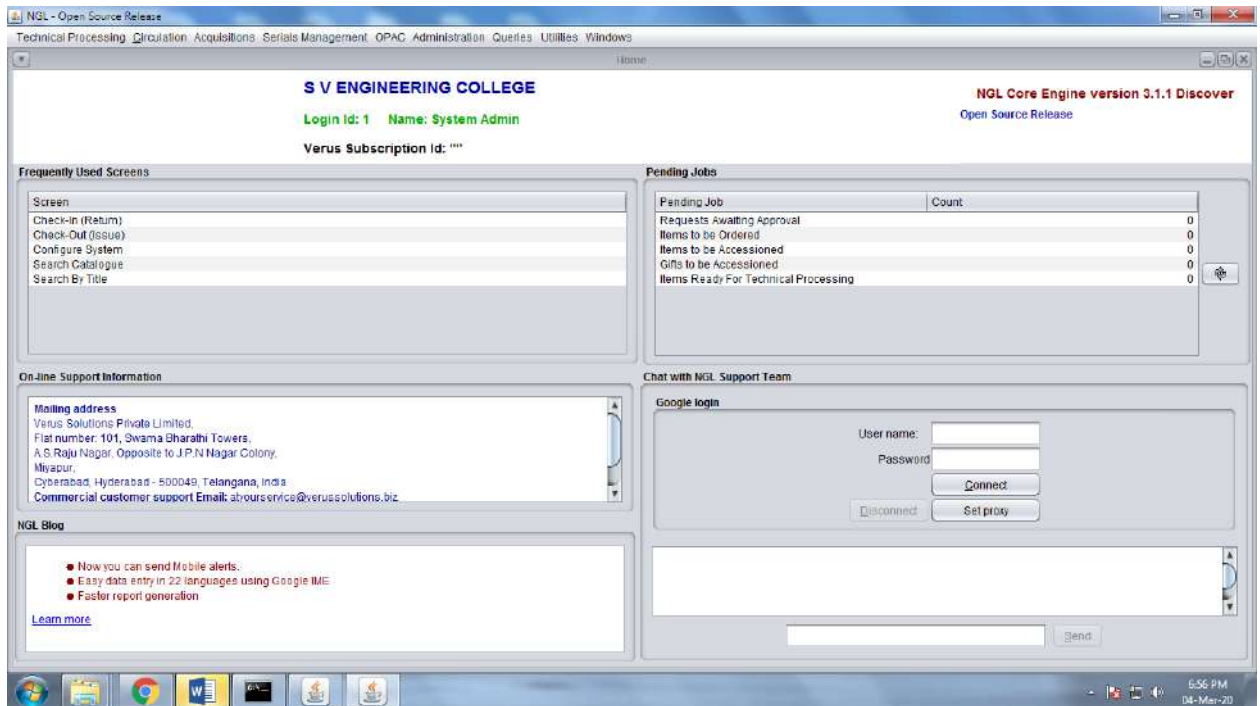
| Category | No. Books issued | Duration |
|----------------|------------------|------------|
| Under Graduate | 2 | 15 days |
| Post Graduate | 3 | 15 days |
| Teaching | 6 | 1 semester |
| Nonteaching | 2 | 15 days |

Text books access for top rank students

- Students who secure top 3 positions in JNTUA Exams from each section of the respective branch of study are eligible to access library books throughout the Semester.

Online Public Accessing Catalogue (OPAC)

- OPAC provides the access to the SVEC library database.
- OPAC allows the users to know the library collection and the status of the library document.
- OPAC allows the users to search the database by Title, Author, Accession number, ISBN number, Publisher of the Book/document.



Reprographic Facilities (Photocopying)

- Photocopying facility is available for students, at a nominal cost.








Periodical Section

- Subscribed more than 60 journals and magazines for Students, Research scholars and Teaching and Non-Teaching fraternity of the institution.
- Current periodicals and journals are displayed in the periodical section.



Library Staff

| S.No. | Name of the staff | Designation | Qualification | Experience | Photo |
|-------|-------------------|--------------------|-----------------------------------|------------|---------------------------------------------------------------------------------------|
| 1 | K. Ramesh | Librarian | MA, MLISc, PGDLAN. | 18 Years |  |
| 2 | K. Kodandaramaiah | Asst. Librarian | MA, MLISc. UGCNET, APSET | 13 Years |  |
| 3 | O. Chenchu Kumari | Asst. Librarian | MA, MLISc. | 10 Years |  |
| 4 | B. Chenga Reddy | Programmer | B.Tech. | 6 Years |  |
| 5 | P. Sulocahana | Attender | Intermediate | 4 Years |  |

Library Collections

| S.No: | Branch | Titles Available | Volumes Available | National/ International Journals (Print) | e-Journals |
|-------|-----------------|------------------|-------------------|---------------------------------------------------|-------------------|
| 1. | B.Tech. EEE | 600 | 3344 | 08 | J –Gate DELNET |
| 2. | B.Tech. ECE | 732 | 3851 | 08 | |
| 3. | B.Tech. CSE | 852 | 5199 | 13 | |
| 4. | B.Tech. IT | 122 | 1034 | 07 | |
| 5. | S & H | 422 | 3434 | | |
| 6. | M.Tech. | 203 | 802 | 24 | |
| 7. | SC Book Bank | 37 | 584 | | |
| 8. | Project Reports | 710 | 710 | | |
| 9. | CD's/DVD's | 1087 | 1087 | | |
| 10. | Back Volumes | 121 | 121 | | |
| 11. | E-Books | 4500+ | 4500+ | | |

List of Print Journals and Magazines Collections

| S. No. | Branch | SUBSCRIPTION FOR JOURNALS FOR THE YEAR 2021 | Publisher |
|--------|--------|----------------------------------------------------------------------------|-----------|
| 1 | EEE | Journal on Power System Engineering | I-Manager |
| 2 | EEE | Inventi Impact: Electrical Engineering | Inventi |
| 3 | EEE | Inventi Impact: Energy & Power | Inventi |
| 4 | EEE | Inventi Impact: Power Electronics | Inventi |
| 5 | EEE | IEEMA Journal | IEEMA |
| 6 | EEE | International Journal of Electrical and Electronics Engineering (IJEEM) | IASET |
| 7 | EEE | Electrical India (Magazine) | Chary Pub |
| 8 | EEE | Competition Success Review (Magazine) | CSR |
| 9 | ECE | International Journal of Advance Mechatronic & Robotics | RIP |
| 10 | ECE | International Journal of Wireless Communications and Networking (IJWCN) | Serials |
| 11 | ECE | International Journal of Electronics and Communication Engineering (IJECE) | IASET |
| 12 | ECE | International Journal of Nanomaterial's and Technology | Serials |
| 13 | ECE | International Journal of Embedded Software & Open Source Systems | Serials |
| 14 | ECE | International Journal of VLSI Design | Serials |
| 15 | ECE | IETE Journal of Research | IETE |
| 16 | ECE | Signals and Telecommunication Journal | Dline |
| 17 | ECE | Journal of Innovation in Electronics and Communication Engineering | Gurunak |
| 18 | ECE | Journal of Image Processing & Pattern Recognition Progress | STM |
| 19 | ECE | ISSS Journal of Micro and Smart Systems | Spr-Ind |
| 20 | ECE | Journal on Embedded Systems | I-Manager |
| 21 | ECE | Indian Journal of VLSI Design | GRP |
| 22 | ECE | Inventi Impact: Antennas & Propagation | Inventi |

| | | | |
|----|-----------|----------------------------------------------------------------------------------|-------------|
| 23 | ECE | Inventi Impact: Microwave | Inventi |
| 24 | ECE | Inventi Impact: Sensing & Actuation | Inventi |
| 25 | ECE | Journal on Image Processing | I-Manager |
| 26 | ECE | Electronics for You(Magazine) | EFY |
| 27 | ECE | Electronics Maker(Magazine) | Em Media |
| 28 | CSE | International Journal of Engineering in Computer Science | Aknik |
| 29 | CSE | International Journal of Data Mining and Emerging Technologies | Diva |
| 30 | CSE | International Journal of Software Engineering and Computing | Serials |
| 31 | CSE | International Journal of Computational Linguistics Research | Dline |
| 32 | CSE | International Journal of Network and Mobile | Serials |
| 33 | CSE | Journal of Data Processing | Dline |
| 34 | CSE | Journal of Information Systems Management | Dline |
| 35 | CSE | Journal on Cloud Computing (JCC) | I-Manager |
| 36 | CSE | Journal on Software Engineering (JSE) | I-Manager |
| 37 | CSE | Journal of Advanced Database Management & Systems | STM |
| 38 | CSE | Recent Trends in Programming Languages | STM |
| 39 | CSE | International Journal of Data Structures | STM |
| 40 | CSE | Journal of Computer Technology & Applications | STM |
| 41 | CSE | Journal of Innovation in Computer Science and Engineering | Gurunanak |
| 42 | CSE | Journal of Digital Information Management | Dline |
| 43 | CSE | Journal of Networking Technology | Dline |
| 44 | CSE | Indian Journal of Computer Science | IJM |
| 45 | CSE | Yojana (English) (Magazine) | MI&B |
| 46 | CSE | PC Quest (Magazine) | Cyber Media |
| 47 | CSE(AI&M) | Journal of Artificial Intelligence Research & Advances | STM |
| 48 | CSE(AI&M) | Journal of Intelligent Computing | Dline |
| 49 | CSE(AI&M) | Journal of Computer Science | Karpagam |
| 50 | CSE(AI&M) | Current Development in Artificial Intelligence | RIP |
| 51 | CSE(AI&M) | Journal of Web Engineering & Technology | STM |
| 52 | CSE(AI&M) | International Journal of Web Applications | Dline |
| 53 | IT | Current Trends in Information Technology | STM |
| 54 | IT | IUP Journal of Computer Sciences | IUP |
| 55 | IT | IUP Journal of Information Technology | IUP |
| 56 | IT | International Journal of Applied Research on Information Technolgy and Computing | Diva |
| 57 | IT | Journal of Innovation in Information Technology | Gurunanak |
| 58 | IT | Asian Journal of Information Science and Technology | TRP |
| 59 | IT | Express Computer (Magazine) | Ind.Exp |
| 60 | IT | Careers 360(Magazine) | CSR |

DIGITAL LIBRARY SERVICES

- ❖ It is a part of the Central Library with Internet access of 100 mbps Shared.
- ❖ It has 25 Computer terminals to access Internet / e-Learning resources, National and International online Journals.
- ❖ Video Lectures delivered by eminent professors from different IITs are downloaded from the website: <http://nptel.iitm.ac.in> (NPTEL) made available in the Digital Library.
- ❖ The Digital Library holding 583 Books CD's and 504 Project Report CD's covering most of Engineering Subjects.
- ❖ Other e-learning resources :

 - J-Gate : www.jgateplus.com
 - DELNET : <http://164.100.247.26/>
 - National Digital Library : <https://ndl.iitkgp.ac.in/>
 - IEEE Back Volumes : <http://172.17.200.12/ieee/>
 - NPTEL Videos : [http:// 172.17.200.12/LocalGuru/](http://172.17.200.12/LocalGuru/)
 - Indian Journals.com : <http://www.indianjournals.com>
 - SWAYAM : <https://swayam.gov.in/>
 - Vigyanprasar Digital Library : <http://vigyanprasar.gov.in/user-account/>
 - E-Books : <http://172.17.200.12/ieee/> & <http://172.16.1.97/drupal/>
 - Question Papers : <http://svcolleges.pbworks.com/>
 - Lecture Notes : <http://svcolleges.pbworks.com/>
 - INFLIBNET-NLIST : <http://nlist.inflibnet.ac.in/user/login.php>



Library Photos:



Central Library Entrance



Central Library Side - A



Central Library Side - B



Central Library Book Racks





Digital Library Entrance



Digital Library Inner View



Reference Section Entrance



Reference Section



Reference Section